



# Nari Kallyan Shangho

## CHILDCARE

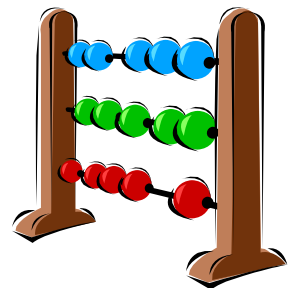
## FACILITY

**NARI KALLYAN SHANGHO RUNS A  
MULTI-CULTURAL CHILDCARE FACILITY  
FOR CHILDREN BETWEEN 2 AND 5  
YEARS OF AGE.**

**The Childcare Facility runs five days a  
week from  
Monday to Friday 9.00 am to 3.00 pm**



We're based at  
**Darroch Annexe**  
**7 Gillespie Street**  
**Edinburgh EH3 9NH**  
**Tel/Fax: 0131 221 1915**  
**Email: [nks@nkshealth.co.uk](mailto:nks@nkshealth.co.uk)**  
**Website: [www.nkshealth.co.uk](http://www.nkshealth.co.uk)**



## **GENERAL INFORMATION**

### **YOUR CHILD AT NKS**

The primary aim of the Childcare Facility is to alleviate deprivation and isolation among children and to provide them with an opportunity to develop a positive self-image within a comfortable environment.

There are two sessions per day:

9.00 am to 11.45 am

12.15 pm to 3.00 pm

Fees are £3.00 per session, per child

Or

£6.00 per day, per child.

Concessionary rates are available for parents on Income Support. If you are attending any of the sessions at NKS then childcare is free during this time. However, you must book a place for your child in advance.

The Childcare Facility is registered with the Social Work Department and inspection takes place once a year.



## **COMPLAINTS PROCEDURE**

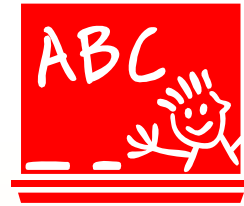
If you are not happy with the service and would like to make a complaint please speak to the Co-ordinator of NKS in the first instance. If you feel that appropriate action has not been taken, you could write to:

SOCIAL WORK DEPARTMENT  
REGISTRATION AND INSPECTION SERVICE  
CLAREMONT HOUSE  
128/130 EAST CLAREMONT HOUSE  
EDINBURGH EH7 4LB

# **PROGRAMME OF ACTIVITIES**

## **THEME OF THE WEEK**

Every week a theme is selected such as months of the year, days of the week, alphabet and activities are developed around it.

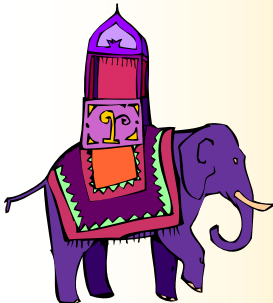


## **STORY SESSIONS**

Stories from various cultural backgrounds are read to children to develop their interest in books.

## **NURSERY RHYMES**

Nursery rhymes are sung to encourage children to sing with other children.



## **OUTINGS & PARTIES**

From time to time, outings and parties are arranged for the children. Moreover, important festivals related to different cultures are also celebrated. This is done in an effort to encourage the children to learn about other cultures.

## **ARTS & CRAFTS**

Painting, paper cutting and colouring are some of the basic skills the children are taught.

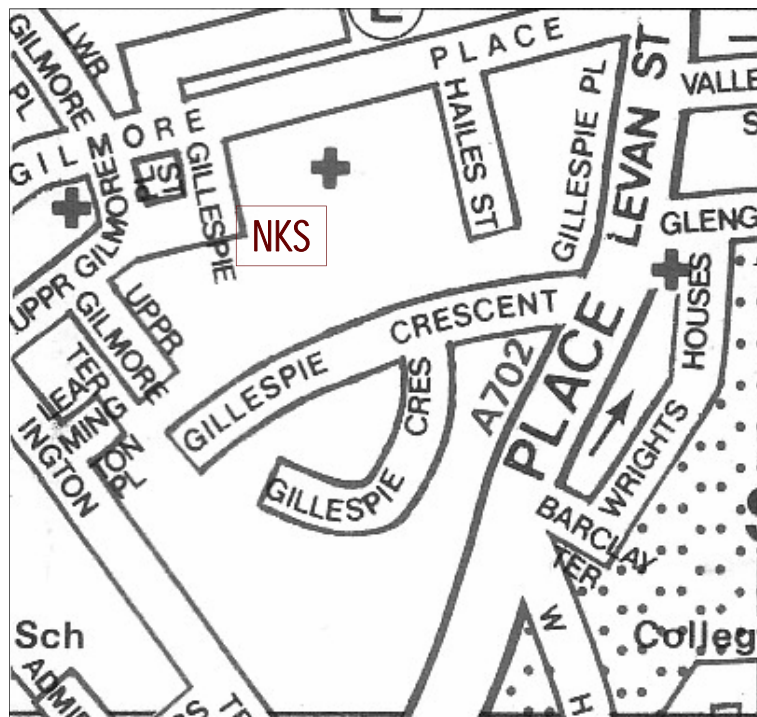


## **COMPUTER**

Computing activities are also available for children, which help them to learn co-ordination of eyes and hand movement and works as a visual tool for developing language and literacy skills.

## HOW TO FIND US

IT'S AS EASY AS



Bus No. 27 and 10 go down Gilmore Place. Just get off on the second stop after King's Theatre.

If this doesn't suit you then many buses go to Tollcross, in which case you should get off at King's Theatre and walk down Gilmore Place (opposite the Theatre).

However, if getting here is difficult for you, give us a ring and we will see how we can help you.